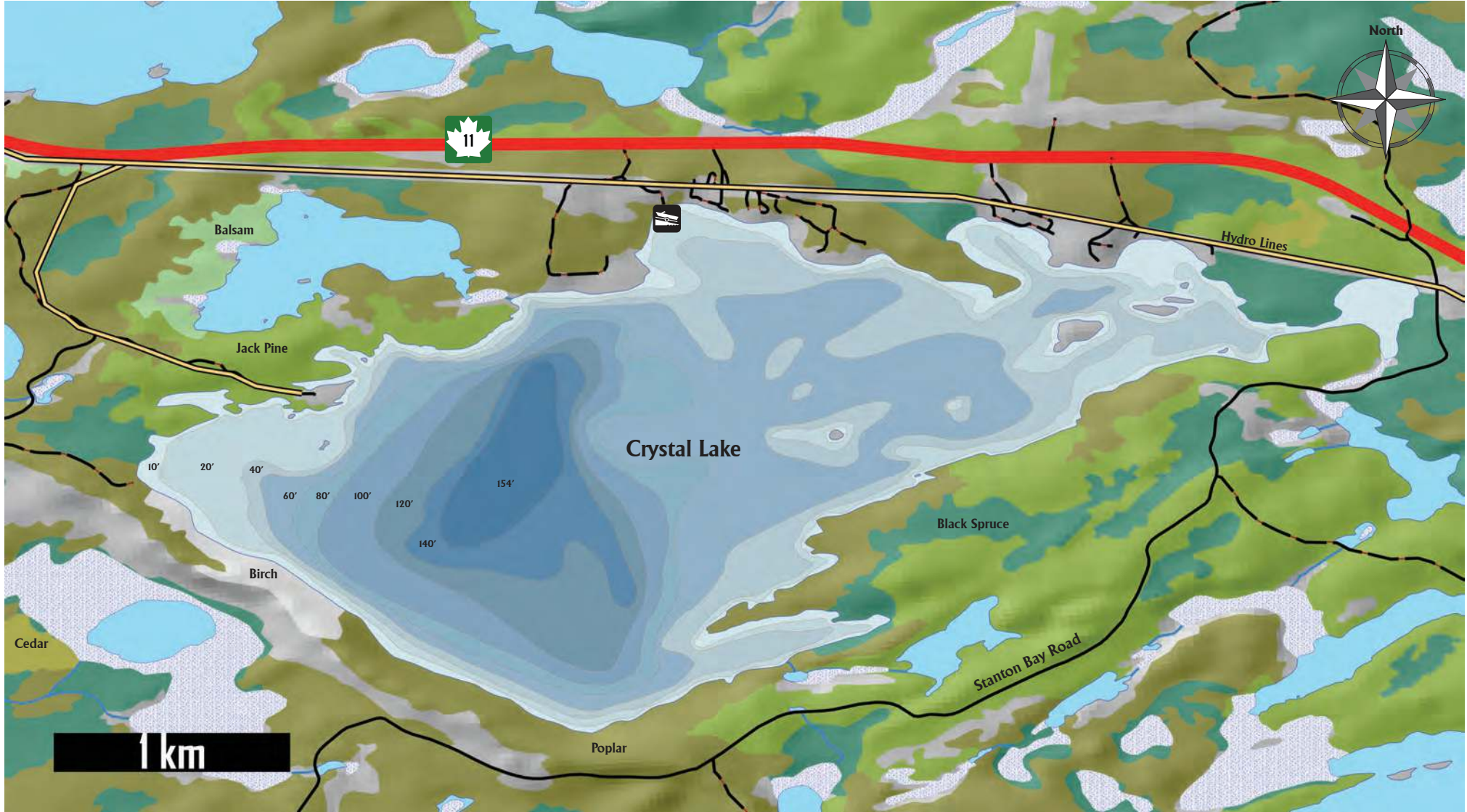


# Crystal Lake: Atikokan

The information on this map was derived from digital databases provided from the Government of Canada as well as generated data from GH Services. Care was taken in the creation of this map. GH Services cannot accept any responsibility for errors, omissions, or positional accuracy. Not all roads or trails may be shown or named. Some roads or trails may be private or incomplete. Forest and bathymetry boundaries are generalized. MAPS NOT FOR NAVIGATION! There are no warranties, expressed or implied, including the warranty of merchantability or fitness for a particular purpose, accompanying this product. However, notification of any errors will be appreciated.





# THUNDER BAY FISHING MAPS

## Crystal Lake (Atikokan)

### About Crystal Lake

**Fishing Zone: 5**

**Surface Area: 1514 Acres**

**Average depth: 51 feet (15.5m) ; Maximum Depth: 154 ft ( 47m)**

**Coordinates (access point): Lat. 48.720527°, Lon. -91.283541°**

**Access:** Via Boat Launch approximately 20 km east of Atikokan (170km W of Thunderbay). Numerous cottages and on lake. Quetico Park camping, hiking, canoeing just to the southwest.

**Common Species:** Lake Trout, Northern Pike

**Uncommon Species:** Walleye, Cisco

Growing winter lake trout fishery with strong spring fishery.

Discussion/chat about this Lake:

<http://fishingboard.thunderbayfishing.com/index.php?/forum/112-thunder-bay-fishing-maps/>

Or Click on Map Chat Icon!



## Directions Map

